

tristrampark

www.tristrampark.com.au



Lots 17 - 24 Ben Love Place, BEACON HILL

Home Price From **\$278,300**



The Benham from Rawson Homes combines sublime contours & architectural lines into a fusion that is worthy of celebration. At first glance this home will intrigue & delight as it reveals its dominant open living areas & spacious bedrooms ready for seclusion or fun filled entertaining.

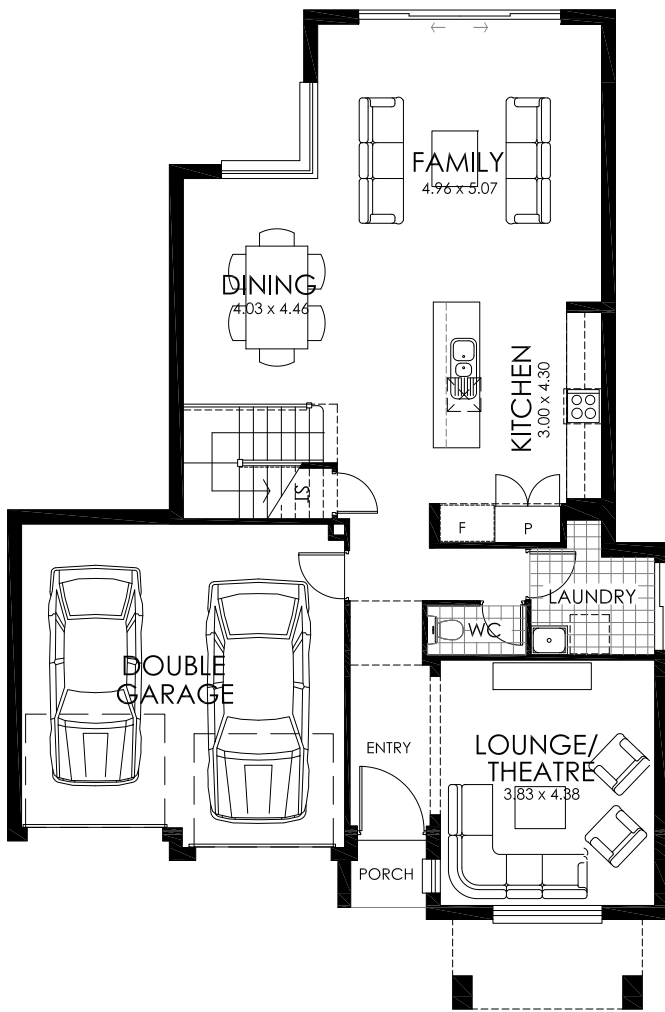
the **Benham** - home package

1300 223 345 • see more at www.rawsonhomes.net.au



RAWSON
HOMES

Rawson Homes. Luxe+... your wish list realised



GROUND FLOOR PLAN



FIRST FLOOR PLAN

- Majestic Façade
- Designed for entertaining
- 4 spacious bedrooms
- Ensuite and WIR to bedroom 1
- Contemporary open plan kitchen/living/dining area
- Theatre Room
- Double garage
- Convenient separate WC

Will your new home include...

- Fixed price tender
- Fixed price piling to slab
- Fixed price site costs
- Connections, Council, OH&S and statutory requirements
- Gas connection / 3 phase electrical connection
- BASIX (including wall & ceiling insulation, gas hot water system & rainwater tank)
- Alarm with 3 sensors
- Remote controlled garage door
- Your choice of our 3 designer kitchens; the Café, Linea & Gourmet complete with stainless steel appliances
- Your choice of colorbond or concrete roof tiles from our extensive range.
- Designer bathroom inclusions
- Luxe + Inclusions.... Life's little luxuries **all at no extra cost**
- Independent building inspection

Home Price From:
\$278,300

Disclaimer: The particulars are set out as a general outline for the guidance of intended purchasers, and do not constitute an offer or contract. Changes may be made during the negotiations. Purchasers must rely on their own enquiries. All information contained herein is gathered from sources that we believe reliable. We have no reason to doubt its accuracy however we cannot guarantee it.