

tristrampark

www.tristrampark.com.au



As of 20th Feb 2009



Elite Facade

Artist Impression

the *capricorn*

4 bedroom family home

Lots 17 - 24 Ben Love Place, BEACON HILL

Home Price From

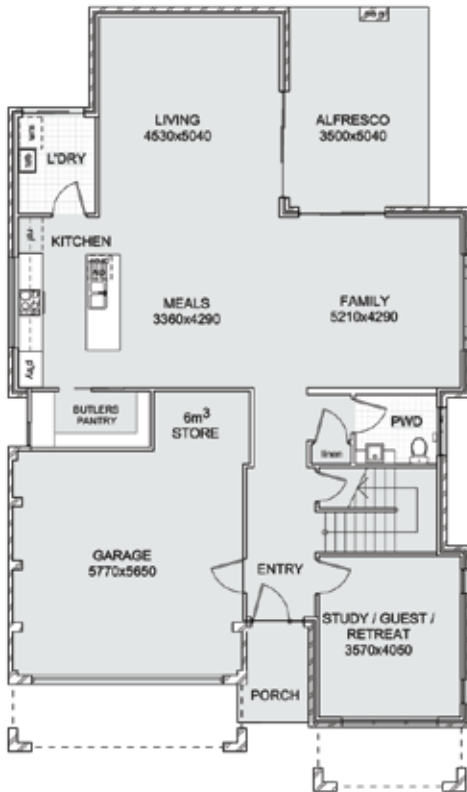
\$323,340



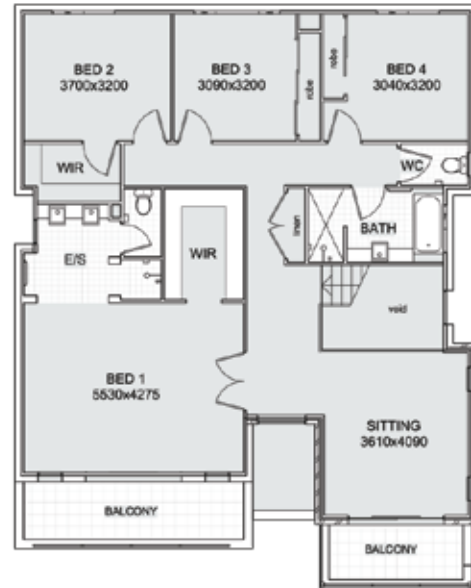
Jandson Homes

Better homes, better home projects, throughout the Sydney region

Ground Level



First Level



Package Includes:

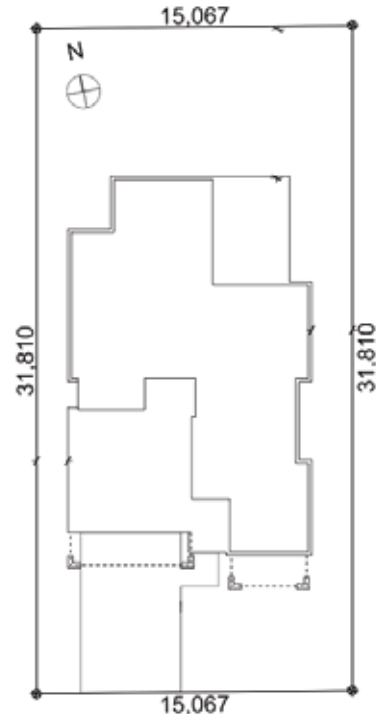
- Elite facade
- All site costs and connections
- M Class slab as required
- BASIX costs
- Our industry leading Classic range of inclusions
- Paved driveway and separate entry path
- Ceramic floor tiles to porch, entry hall, kitchen, dining and family rooms.
- Selected carpet to other living areas and bedrooms
- Stainless steel or white European appliances
- Alfresco area to rear at no extra cost
- 6 months maintenance warranty (twice the industry average)
- No hidden extras

Bonus Inclusions:

- White gloss panel polyurethane kitchen doors
- 20mm Ceasarstone kitchen benchtops
- Deluxe water filter
- B&D remote control garage door
- Stainless Steel Canopy rangehood

(For land & home contracts exchanged by C.O.B. 31st December 2009)

Site Plan



Specifications

Living: 269.56m²
 Garage: 38.52m²
 Porch: 3.99m²
 Alfresco: 17.64m²
 Balcony: 16.26m²
 TOTAL: 345.97m²
 Squares: 37.2sq

Home Price From

\$323,340

Land enquiries - 0404 396 050 • HomeWorld open 7 days 9629 5680

www.jandson.com.au | e-mail: sales@jandsonhomes.com.au



Disclaimer: The particulars are set out as a general outline for the guidance of intended purchasers, and do not constitute an offer or contract. Changes may be made during the negotiations. Purchasers must rely on their own enquiries. All information contained herein is gathered from sources that we believe reliable. We have no reason to doubt its accuracy however we cannot guarantee it. The Astoria Group reserve the right to alter specifications and/or designs without notice at anytime.