

tristrampark

[www.tristrampark.com.au](http://www.tristrampark.com.au)



**HUXLEY HOMES**  
*Building Lasting Relationships*

Lots 17 - 24 Ben Love Place, BEACON HILL

Home Price From **\$335,000**



The *Whitfield*

Disclaimer: The particulars are set out as a general outline for the guidance of intended purchasers, and do not constitute an offer or contract. Changes may be made during the negotiations. Purchasers must rely on their own enquiries. All information contained herein is gathered from sources that we believe reliable. We have no reason to doubt its accuracy however we cannot guarantee it.

# tristrampark

Lots 17 - 24 Ben Love Place, BEACON HILL

## The *Whitfield*

### *Space and Light are the essence;*

Simplicity and a subtlety of style are the keynotes in this refreshing and appealing two storey Huxley family Home.

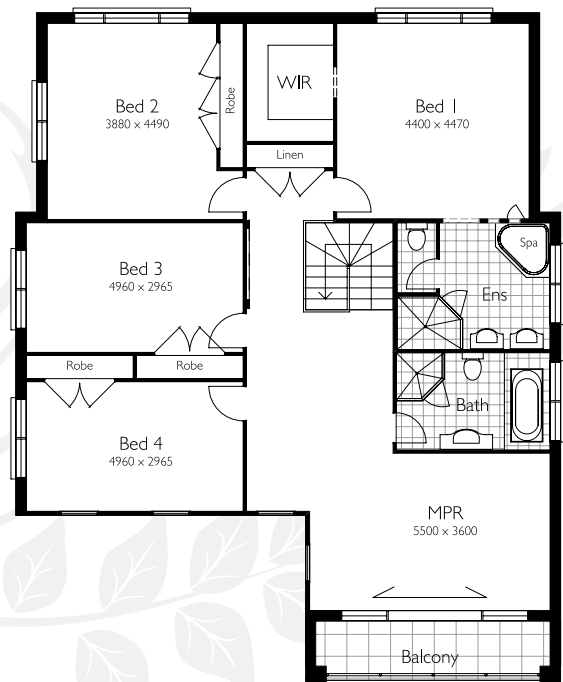
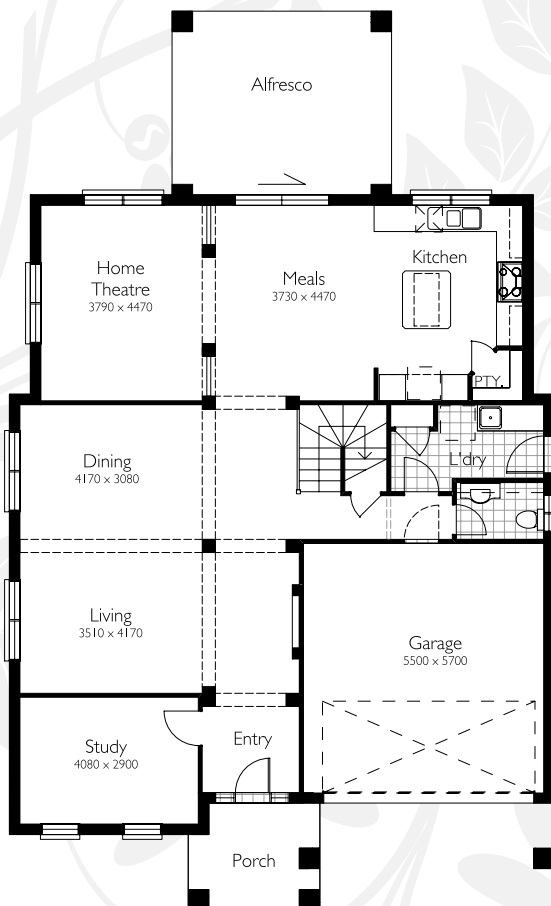
Ground Floor: Formal Living, dining or Media room, family room, meals area, rumpus and Alfresco

First Floor: Generous four bedrooms with two bathrooms.

*Makes easy living in this quiet location.*

#### Package Includes:

- Carpet & tiles
- Flyscreens
- 2700mm ceiling on ground floor
- Granite kitchen
- Remote control garage door
- Face brick feature porch and tiled balcony
- Tiled alfresco area
- Site costs
- BASIX and statutory compliance



Width: 12.46m  
Depth: 16.36m  
Total area: 347.85m<sup>2</sup>

Home Price from  
**\$335,000**

For further information

Joe Duval  
**0420 272 578**

Tristrampark  
**0404 396 050**

**HUXLEY HOMES**  
Building Lasting Relationships



[www.tristrampark.com.au](http://www.tristrampark.com.au)